

Civic Mission Framework (Wales)

Strategic Intent

Respond and support national, local and regional challenges, and share best practice to connect universities closer to their communities.

Deliver and uphold the Well-being of Future Generations (Wales) Act 2015 well-being goals and ways of working.

Reflect universities Research Wales Innovation Fund strategy actions.

Contribute to HEFCW's Research and Innovation: vision for Wales.

Continue to work with Welsh Government to develop the thinking around civic mission as an emerging and evolving priority.

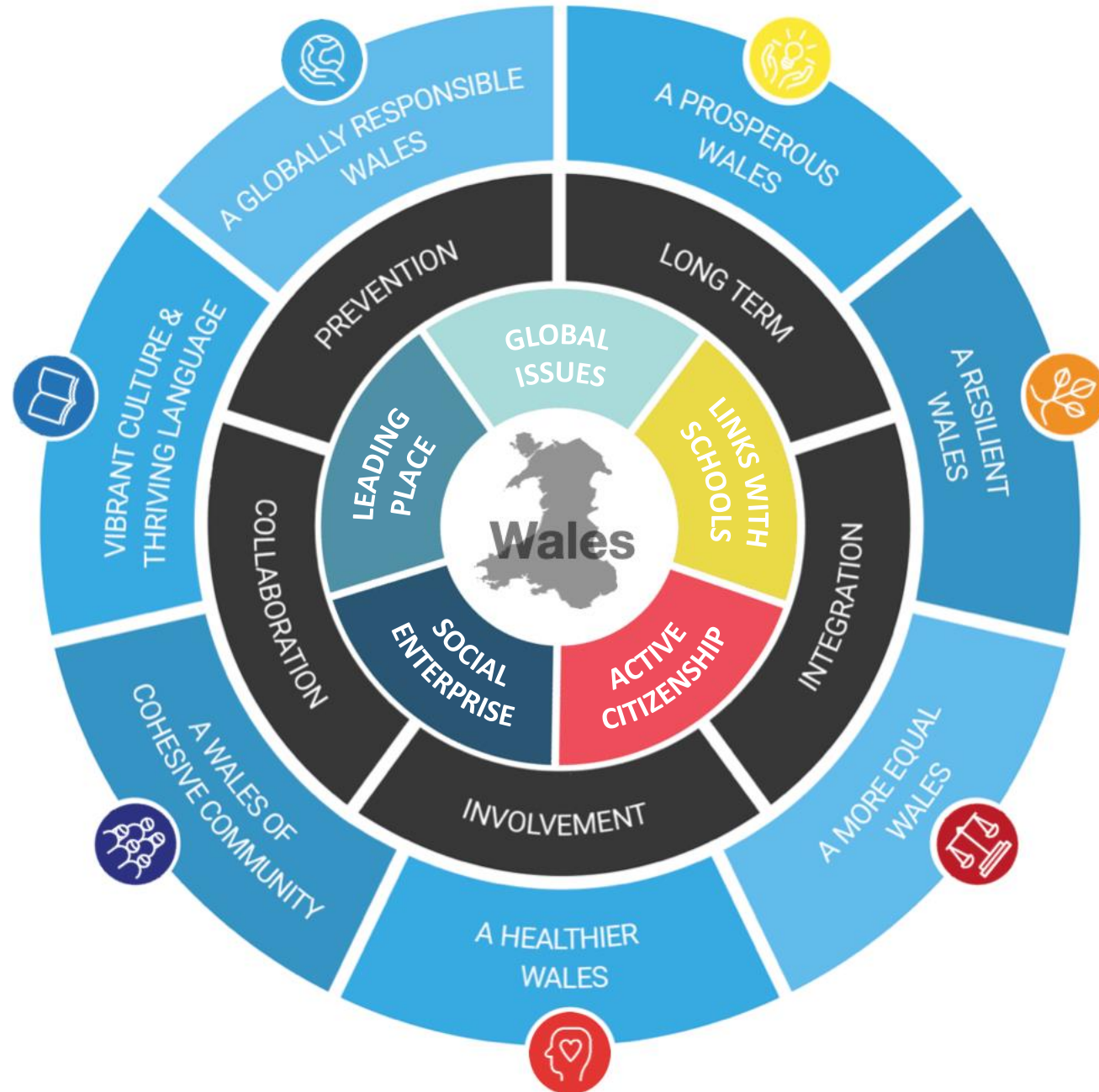


What is Civic Mission?

Civic Mission means action for the purpose of promoting or improving the economic, social, environmental or cultural well-being of Wales and beyond (including action that may achieve any of the well-being goals in section 4 of the Well-being of Future Generations (Wales) Act 2015).



Civic Mission Framework



Civic Mission Themes

These four key areas of action are all focused on universities being better connected and contributing to their places and people, simultaneously connected to the world and using these connections to the benefit of their local communities and Wales:



Key Principles

The Well-being of Future Generations (Wales) Act 2015 is at the heart of the Civic Mission Framework. The framework highlights the seven wellbeing goals from this unique legislation as being key principles to inform and guide how universities contribute to civic mission in Wales.



A prosperous
Wales



A Resilient
Wales



A More
Equal Wales



A Healthier
Wales



A Wales of
Cohesive
Communities



A Wales of
Vibrant Culture
& Thriving
Welsh
Language



A Globally
Responsible
Wales



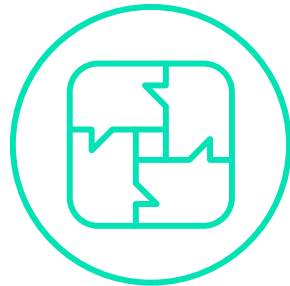
The Five Ways of Working

‘The sustainable development principle is defined as acting in a manner which seeks to ensure that the needs of the present are met without compromising the ability of future generations to meet their own needs.’ To do this, the sector must take account of the ‘five ways of working:’



Long-term

The importance of balancing short-term needs with the needs to safeguard the ability to also meet long-term needs.



Integration

Considering how the public body’s well-being objectives may impact upon each of the well-being goals, on their objectives, or on the objectives of other public bodies.



Involvement

The importance of involving people with an interest in achieving the well-being goals and ensuring that those people reflect the diversity of the area which the body serves.



Collaboration

Acting in collaboration with any other person (or different parts of the body itself) that could help the body to meet its well-being objectives.



Prevention

How acting to prevent problems occurring or getting worse may help public bodies meet their objectives.



Leading Place

1. Develop links across local community, city, regional and national levels.

Example: **Cardiff University** are building on the success of their [Community Gateway Project](#) through continued engagement with the Grangetown community and through considering how this could be expanded to other disadvantaged groups in Cardiff, especially where inequalities have been (or will be) created by COVID-19.



2. . A co-created civic mission: Learning and leading together for positive whole system change.

Example: **Wrexham Glyndwr University** is developing a new approach to co creating the civic mission in conversations with leaders and communities, a key focus is to establish a Public Service Lab to enable a community of system leaders, create space for Conversations and commitment to useful work together to [co create solutions to societal challenges](#).



3. Engage with other key civic leaders at a national and community level by using expertise, experience and resources

Example: **The Open University in Wales** builds collaborative approaches to pilot community projects e.g. [Aneurin Leisure Trust creative writing](#) (Blaenau Gwent), [Covid-19 Chronicles from the Margins](#) (Swansea).



4. Open up excellent teaching and research facilities to host communities and engage off campus by disseminating work in the local community.

Example: **Aberystwyth University** have developed over 75 new innovative distance learning CPD modules and short course packages, specifically to address the current skills deficit in Mid-Wales and anticipated employment problems post-COVID.





Links with Schools, Colleges and other learning environments

1. Developing links with schools, colleges and other learning environments

Example: Working in collaboration with the Urdd and Cardiff Healthy Schools team, **Cardiff Met's Open Campus** programme supports schools across Cardiff with PE and physical activity and has provided more than 12000 sport and recreation opportunities for school children across the city.



2. Raise standards and contribute to school improvement

Example: **Aberystwyth University's** redevelopment of the iconic historic sea front building 'Hen Goleg' (Old College), which will re-open in 2023, includes dedicated space for young people – the 'Youth Zone'. This space will provide skills development, educational opportunities and access to learning activities outside the classroom in an area of socio-economical disadvantage, and a region where rural isolation and social exclusion are major risks.



3. Reduce the attainment gap and support the new curriculum 2022 transitions and implementation

Example: **Wrexham Glyndwr University** are developing, in partnership with the PSB's and Coleg Cambria, a Children's University which will support extra-curricular learning and engaging children and parents in learning, social, cultural and sport activities.



4. Maximise relationships with industry and other academic organisations to help build school and teacher capacity in key disciplines

Example: **All universities within the Cardiff Capital Region** (*OUIW, CU, Cardiff Met and USW*) have worked collaboratively with local FE colleges and industry to develop workshops and placements aligned to industry strands.





Active Citizenship

1. Commitment of the sector to being an accredited Living Wage sector

Example: **All nine universities in Wales** have now been accredited as a living wage employer by the Living Wage Foundation, and has committed to paying its employees at least the voluntary living wage rate.



2. Increasingly engage its students as active participants in campus and university organisation

Example: **The University of South Wales** are supporting the removal of barriers for refugees and asylum seekers accessing university with the [Refugee and Asylum Seeker Sanctuary Scheme](#). The scheme provides refugees and asylum seekers access to language tuition, and language preparation before they start their degree.



3. Review students' voice within the decision-making around governance, executive and services so that they have a bigger role in the decisions that affect them

Example: **Bangor University's** 'Embedding the Student Voice Project' supports the development of a University-wide network of innovative, school-based systems.



4. Develop accessible and creative means of sharing knowledge, understanding and innovation with people of all ages

Example: **The Open University in Wales** is developing critical thinking digital online resources and piloting a citizen's assembly online.



5. Commitment to developing a kinder, compassionate and more resilient Wales (Trauma and ACE's informed approach)

Example: **Wrexham Glyndwr University** is working in partnership with the National ACE's Hub to become the first Trauma & ACE's informed University in the UK. Working with partners in Housing and the 2025 movement to develop this as a whole society approach across sectors.





Social Enterprise, Business Skills and Employability

1. Social enterprise, business skills and employability

Example: **Cardiff University** are building Wales' skills for the future by working with the Future Generations Commissioner to provide practical advice on how public bodies can set objectives relating to skills and take all reasonable steps to meet them in a way that contributes to the Commissioner's wellbeing goals.



2. Connect research with opportunities to directly address societal challenges and opportunities

Example: **The University of South Wales** has launched a specialist project to help increase the number of women in STEM fields by establishing the Wales Women in STEM Network.



3. Build on good practice and look at providing greater institutional and sector-wide social innovation and entrepreneurship opportunities for undergraduates

Example: **Swansea University** have invested into an Accelerator programme with regional development groups and enterprise zones (such as Neath Port Talbot and Swansea Council) to enable student and graduate start-ups to stay in the region.



4. Increase amount of graduate start-ups

Example: **UWTSD** has a long tradition of learning from their entrepreneurial alumni and their business success which includes an extensive international network to ensure that graduates acquire the right skills to make a difference to society.





Responding to Global Issues

1. Supporting peoples' physical and mental well-being to benefit future health

Example: **Cardiff Met's [Girls Together campaign](#)** places a focus on engaging teenage girls who are currently inactive and lack confidence or self-esteem. They cover topics such as body image, unhealthy and healthy behaviours, media literacy and barriers to participation.



2. Contribute to the Covid-19 impact and recovery

Example: **The Open University in Wales** has been working with Careers Wales to provide support for furloughed workers by online training webinars and support to Working Wales staff.



3. Support Wales' green recovery

Example: **Bangor University** has maintained its status as a 'Sustainable University' underpinned by its top ten UI Green Metric global University ranking. The university's Sustainability Lab leads on all aspects of sustainability within the institution.



4. Understanding the causes and symptoms of health inequalities

Example: The Assistive Technologies Innovation Centre, part of **UWTSD Swansea College of Art**, has a demonstrable track-record in providing practice-based research and development to support medical companies and healthcare related charities.

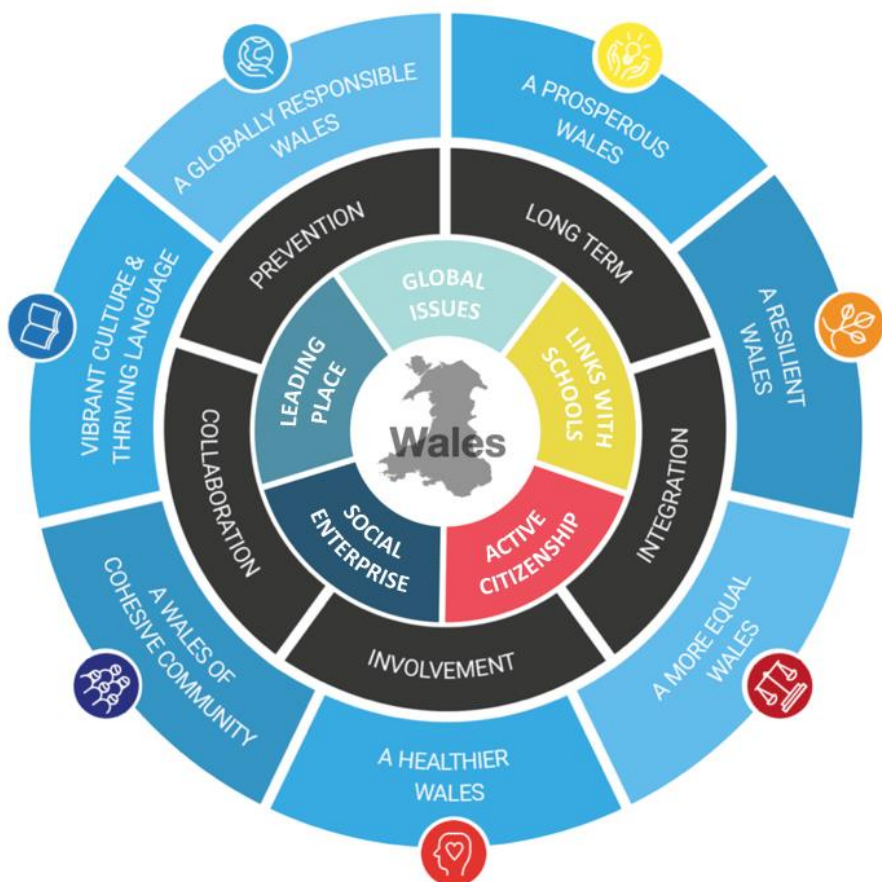


How to use the Civic Mission Framework

1. The Framework is designed to guide universities in their decisions around civic mission and frame civic activity across Wales through making strategic choices to prioritise certain civic objectives.
2. To help universities engage and work in new ways to reframe the conversation with partners, leaders and communities.
3. The Framework can be used for individual universities or as the HE Sector to highlight the importance of a strong co-created civic mission, embedded as a core strategic focus.
4. The five civic mission themes will capture the range of activity happening within Welsh universities outlining each example per slide.
5. Each activity will highlight how it aligns with different wellbeing goals and ways of working.



Impact



The Civic Mission Framework is intended to demonstrate the impact of the HE sectors civic mission work across their local communities, Wales and globally.

The framework is a flexible ‘live’ document that can be updated to reflect current government priorities and funding requirements.

Universities will review and update their entries on an annual basis.

A comprehensive evaluation will need to be completed on a regular basis to ensure efficacy of the framework for universities and the funding council.

Potential to measure impact against the Future Generations Act and 26 National well-being indicators.

References

- Keynote speech, Kirsty Williams, 2016 [A civic mission needed to connect universities and communities after EU vote – Kirsty Williams | GOV.WALES](#)
- Keynote speech, Kirsty Williams, 2017 <https://gov.wales/growing-civic-mission-higher-education-wales>
- [Well-being of Future Generations \(Wales\) Act 2015](#)
- [HEFCW's Research Wales Innovation Fund strategies](#)
- [HEFCW's Research and Innovation: vision for Wales](#)
- [From locking down to levelling up, Resolution Foundation, Nov 2020.](#)
- [HEFCWs annual remit letter 2020-2021](#)